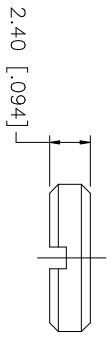
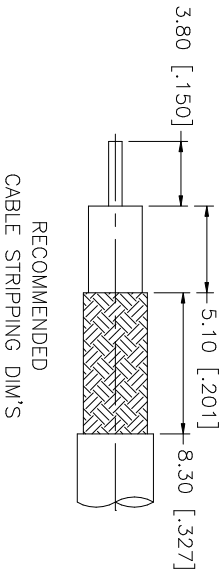
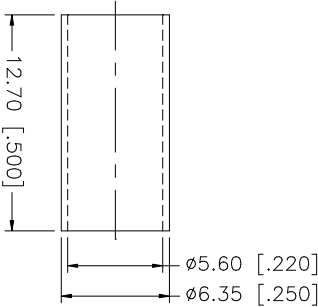
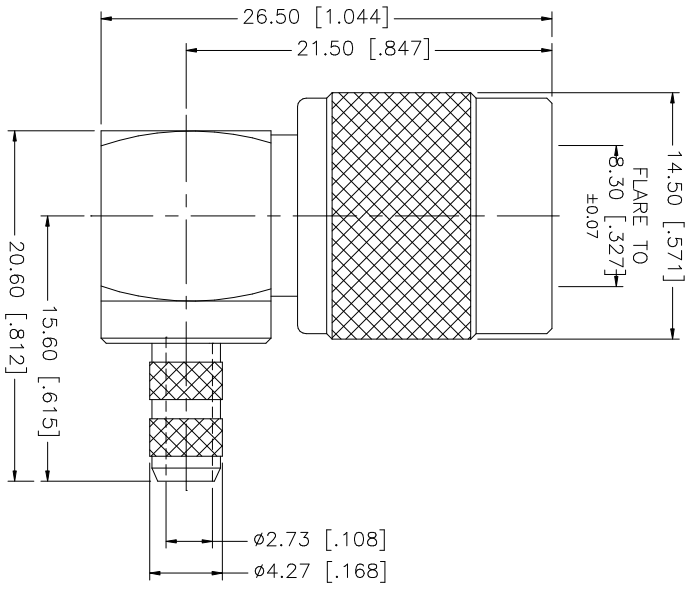


REV.	DATE	DESCRIPTION
A	04/31/03	UPDATE DRAWING FORMAT



NOTE:
1. CONTACT PIN TO SOLDER

QTY	FINISH	MATERIAL	DESCRIPTION
1	NICKEL	BRASS	1. CONTACT PIN
1	NICKEL	BRASS	2. BODY/BARREL
1	NICKEL	COPPER	3. FERRULE
1	RED	RUBBER	4. GASKET
1	GOLD	BRASS	5. CONTACT PIN
1	NATURAL	TEFLON	6. INSULATOR
1	NICKEL	BRASS	7. BODY/BARREL
1	NICKEL	BRASS	8. BODY/BARREL
1	NICKEL	BRASS	9. BODY/BARREL

UNLESS OTHERWISE SPECIFIED DIMENSIONS ARE IN MILLIMETERS. DIMENSIONS IN [] ARE IN INCHES AND FOR CUSTOMER REFERENCE ONLY. TOLERANCES FOR MILLIMETERS ARE:
0.5 - 8mm ± 0.20mm
8 - 30mm ± 0.40mm
30 - 120mm ± 0.50mm
UNLESS OTHERWISE SPECIFIED TOLERANCES FOR INCHES ARE:
.020 - .315 = ± 0.007"
.315 - 1.180 = ± 0.015"
1.180 - 4.724 = ± 0.020"

DO NOT SCALE DRAWING

Amphenol Connex

PART DESCRIPTION
TNC R/A CRIMP PLUG
(FOR RG-55/U, 142A/U, 223/U, 400/U)

PART NO. 1222430

APPROVALS	DATE
DRAWN G.R.S.	04/31/03
CHECKED	
ISSUED	
SHEET 1 OF 1	

CAD FILE C:/122/122430.DWG

DWG. NO. 1222430.DWG REV. A SIZE A SCALE NA